

CERTIFICATE OF LOCATION OF GOVERNMENT CORNER

EAST QUARTER Corner of Section 4, Township 107, Range 39, 5TH P.M.

STATE OF MINNESOTA, County of MURRAY

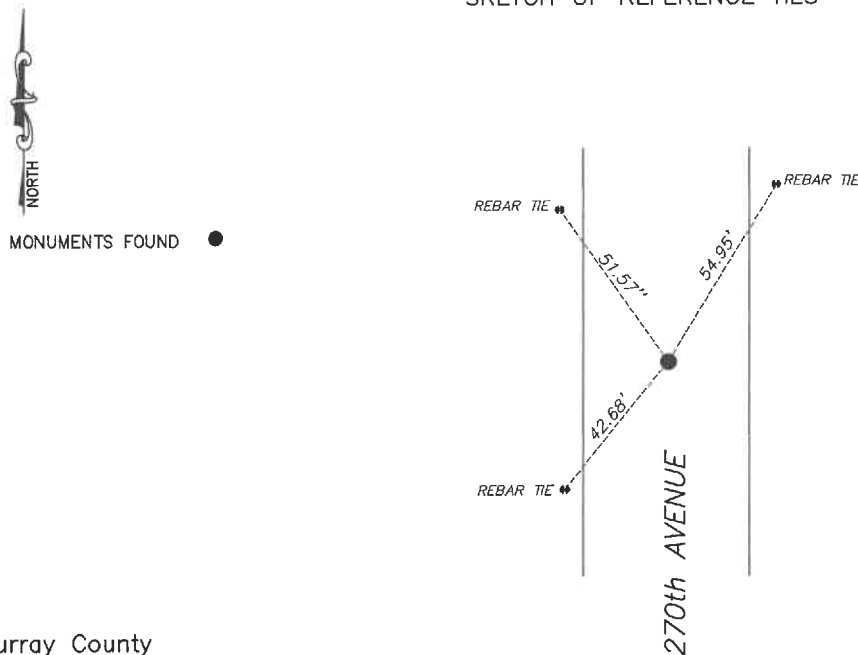
At the corner location shown on the sketch:

☒ On 6/4/2024 found a capped iron #45874 over stone. Ties are good
DATE

☒ left monument as found, ☐ lowered monument, ☐ removed monument (explain)

☐ On _____ placed a _____
DATE

SKETCH OF REFERENCE TIES



Murray County
Coordinate System NAD83 (1996)

N: 192630.539
E: 564059.998

WGS84
LAT: 44°06'06.7675"
LON: -95°31'22.1697"

Statement of evidence relative to this corner location is on back of page.

I hereby certify that this document and the data contained herein was prepared by me or under my direct supervision.

Daniel L. Bueltel
License No. 43844

3/12/2025
DATE

MAR 13 2025

Karen Bram
MURRAY COUNTY RECORDER

Statement of Evidence

EAST QUARTER CORNER SECTION 4, T107N, R39W of the 5th P.M.

In July of 1861, J.W. Myers layed out the original township lines.

In September of 1861, L. Brockmann did the original township subdivision.

On June 22, 1913 a survey by J.W. Woolstencroft notes a stake for the corner.

In December 2020 Westwood Professional Services excavated with a backhoe and found a 18x11x5" stone at a depth of 3 ft with remnants of wood next to it then set a $\frac{1}{2}$ " rebar and cap LS #45874 above it.

On June 4, 2024, Bueltel-Moseng Land Surveying found a $\frac{1}{2}$ " rebar with LS #45874 overtop of stone.